

# **Configuring Adobe Acrobat**

## **for use with**

### **Tube Sheet Diagram**

The following notes show the Adobe settings used by the author to permit TSD to print PDF files via the Acrobat Distiller program. This is not a definitive guide, and some of these settings may be different to those adopted by other users. We look forward to any feedback, which we may later incorporate into this guide.

Adobe Acrobat prints PDF files in two stages...

- 1 - Generates a formatted Post Script (PS) printer file, then
- 2 - Converts the PS file to the PDF version.

The PostScript and PDF files are stored in Adobe directories, which, by default use 32-bit long filenames. Unfortunately these long filenames appear to prevent TSD16 (a 16-bit program) working effectively. Therefore both Adobe Acrobat and Adobe Distiller must be reconfigured to use filenames that are compatible with the older 8.3 (16-bit) format. After the changes Acrobat and Distiller will work normally with both 16-bit and 32-bit programs. Some other settings are also described.

**Doug Breeze**  
**Inspection Software Limited**

isl@inspection.co.uk

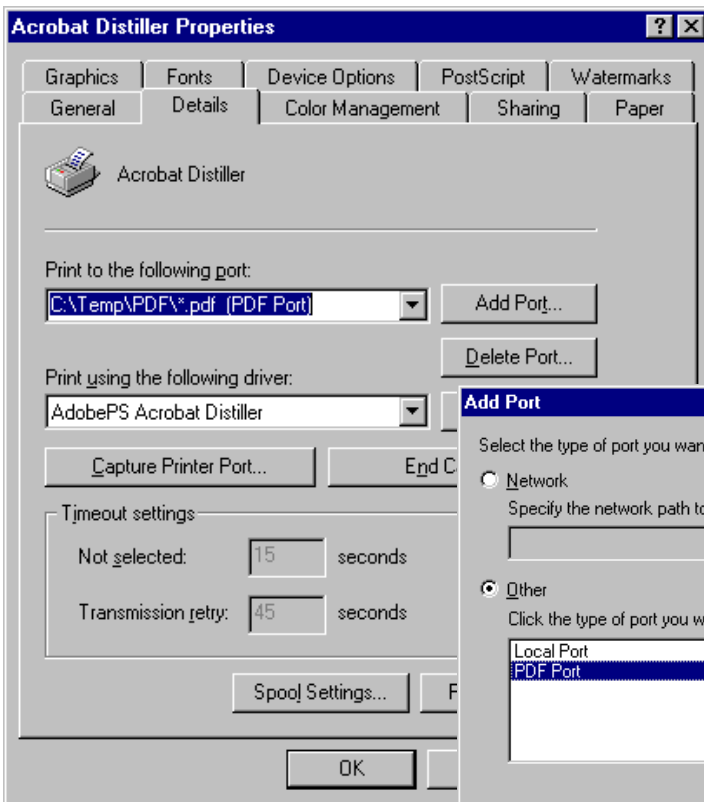
## 1: Create a Temp directory for the PDF files

Using Windows Explorer's **|File>New>Folder|** command to create a temporary directory called 'C:\Temp\PDF'.  
(Note: Users can use any other directory name, anywhere on your system, but it **must** be in 8.3 format.)

## 2. Configure the Distiller Printer to output to the Temp directory.

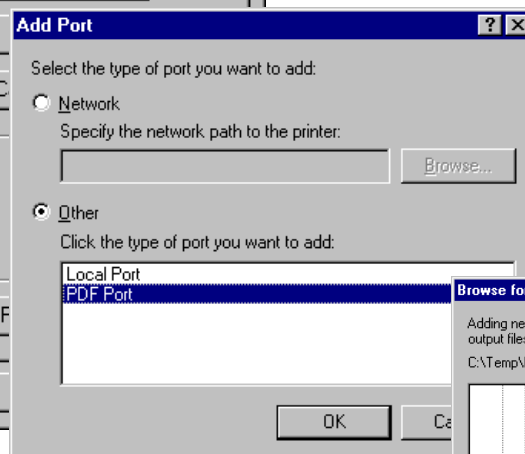
From the Start button click **|Start>Settings>Printers|** to open the Printer page

Click with mouse-right on the 'Acrobat Distiller' icon, then select **'|Properties|'**....

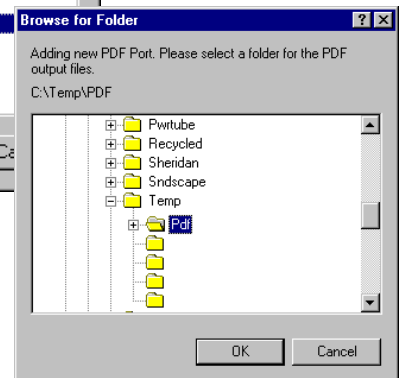


Firstly, in the "Print using...driver" option box, select 'AdobePS Acrobat Distiller'.

Hit the 'Add Port' button, and select **|Other>PDF Port|**...



Hit the OK button, then browse to the previously created Temp directory.

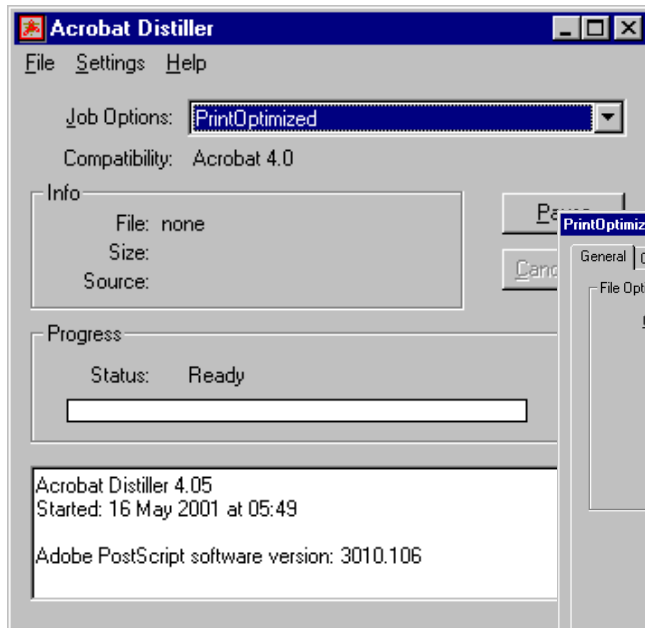


Hit OK in the Browser page to finish.

Ensure that the "Print to... port" text corresponds with the temporary filename, e.g. 'C:\Temp\PDF\\*.pdf (PDF Port)'.

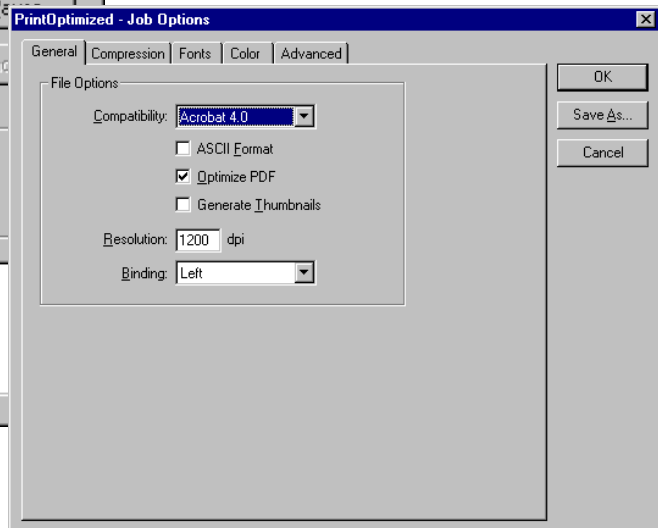
### 3. Configuring the Distiller Options

From the Start button, click on [Start>Programs>Adobe>Adobe Acrobat 4.0>Distiller 4.0] to open the Acrobat Distiller configuration page...

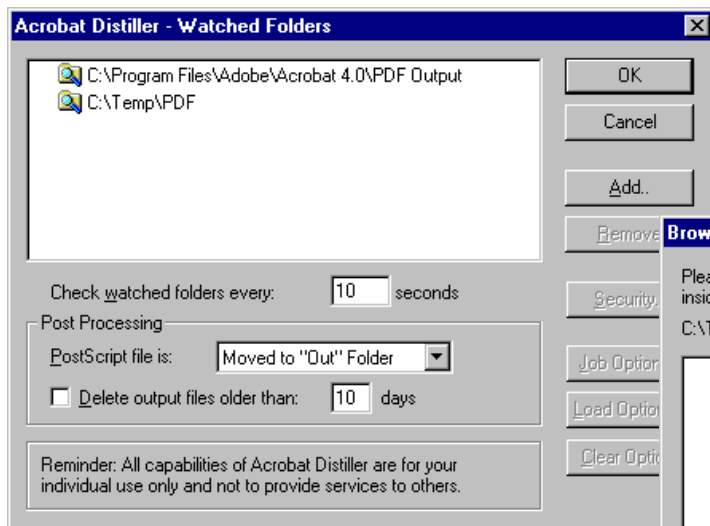


Select the [Settings>Job Options] menu.

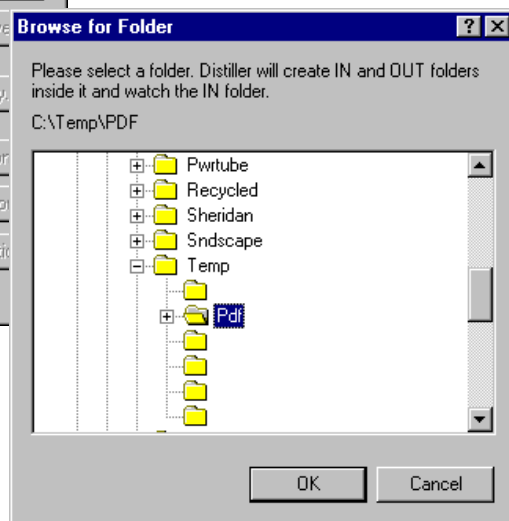
Select 'Acrobat 4.0' in the Compatibility option box. Hit OK to finish



From the Acrobat Distiller page, select the [Settings>Watched Folders] menu...



Hit the Add button, then browse to the previously created temporary directory.

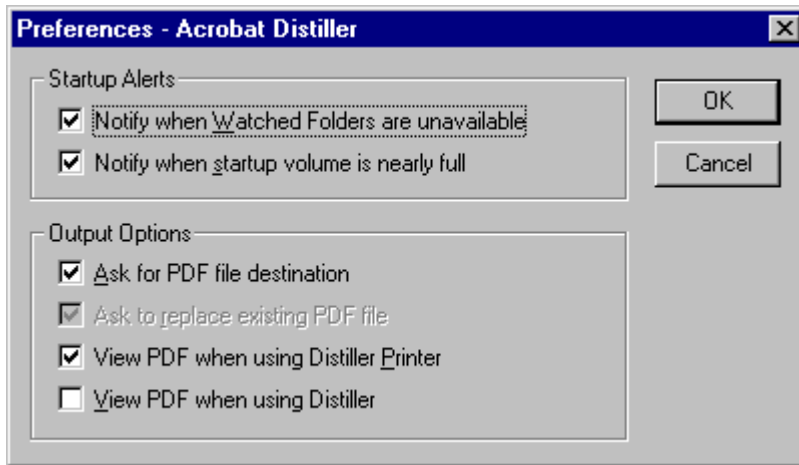


Hit OK to finish.

Ensure that the temporary directory appears in the 'Watched Folders' list, as above.

## Configuring the Distiller Options (continued)

From the Acrobat Distiller page, select the **Preferences** menu...



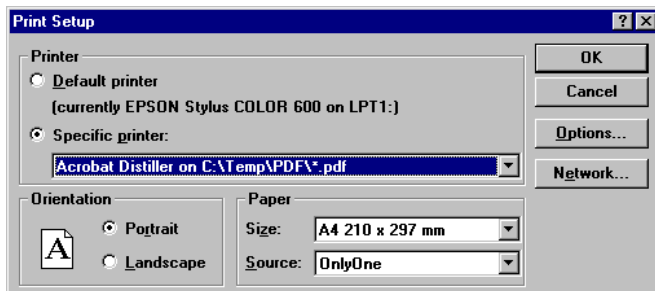
Ensure that the 'Ask for PDF file destination' box is 'checked'. This allows users to define the name and location of the TSD PDF file during subsequent printing

Optionally, the 'View PDF when using Distiller Printer' can also be 'checked' (recommended). This option forces Acrobat to be opened and display newly created TSD PDF reports.

## 4. Printing a PDF File From TSD

From the TSD Report Generator, select **File>Printer Setup** menu.

(Do not use the Printer Set-up option from within the Print dialog box... this option works only for print operation **after** the current print!)



Select Acrobat Distiller, either as the default printer or as a Specific printer. Hit OK to finish

From the TSD Report Generator, print the report just as usual, into the Distiller and wait for the 'Save PDF' dialog box to appear...

