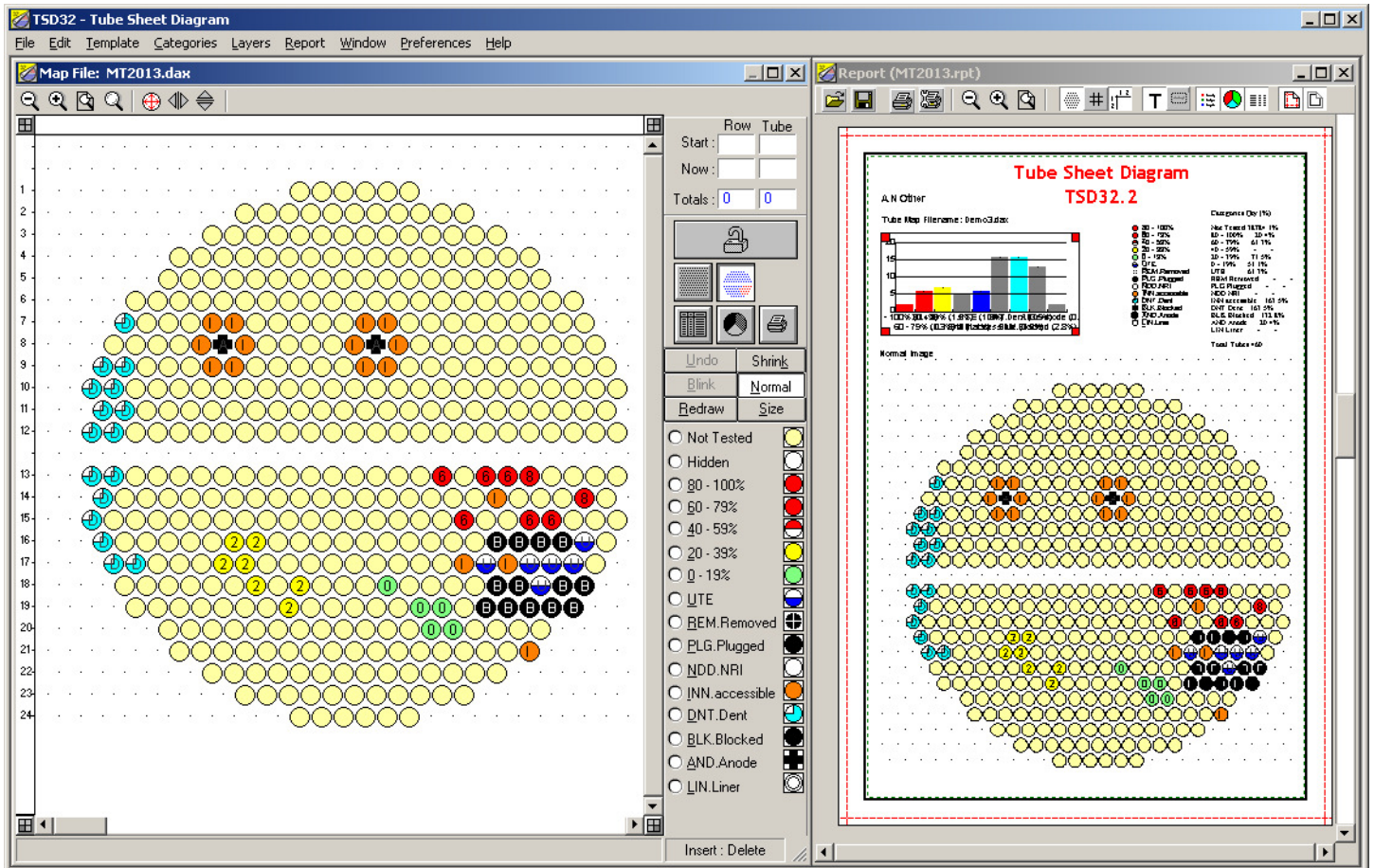


# Tube Sheet Diagram

## TSD32.2

for 32-bit and 64-bit Windows

Reporting Software for Heat Exchanger Inspection Surveys



TSD32.2 Tube Map and Report Generator

- Draw up to 40,000 tubes in a 200 x 200 matrix, or even larger layouts on request
- Redraw on screen at around 200,000 tubes/sec on XP, Vista or Win7, 32-bit and 64-bit
- Instant lists of 'at-risk' and 'plugged' tubes, by category, or sequentially
- Number tubes in any direction, using any alpha-numeric characters
- Instantly reverse the tube map to show its appearance at the remote end of heat exchangers
- Save dozens of man-hours on each survey, leaving time to present finished report to clients before leaving site
- Compatible with existing TSD16 file formats

- Add survey results manually on screen, or import from EC analysers using TSD format, Multiview format or from customers own format
- Import records at around 5,000 tubes/sec

TSD Compatibility Table

Windows Version	Bits	TSD Version	
		TSD16	TSD32.2
Win 3.11 to Win98, 2K, NT	16	✓	✗
Win XP	32	✓	✓
Win Vista	32	✓	✓
Win Seven	32	✓	✓
Win XP	64	✗	✓
Win Vista	64	✗	✓
Win Seven	64	✗	✓
Windows Network Licence	32/64	✗	✓
Win Seven Pro XP Emulator	32/64	✗	TBA
Windows Virtual Machines	32/64	✗	✗

# Tube Sheet Diagram TSD32.2

For 32-bit and 64-bit Windows

## Summary of Principle Features

- System:** Windows XP, Vista, Win7; all versions, including 32-bit and 64-bit  
2GB RAM or more  
Hard disk with at least 100 MB free  
Screen resolution up to full HD 1920 x 1080
- Tubes:** Maximum Columns: ~200 \*  
Maximum Rows: ~200 \*  
Maximum Tubes: ~40,000 \*
- Displays:** Design View: Create and edit tube layouts  
Map View: Assign categories to tubes, or import external results  
Chart View: Draw and configure charts  
Table View: List data in tabular format  
Report Generator: Create user definable report layouts, etc.
- Design:** Straight tubes or U-tubes, in aligned rows, columns or rectangular grid  
Reflect, flip or duplicate design layouts, horizontally and vertically  
Delete or insert individual tubes, rows, columns or blocks
- Map:** Automatic alpha-numeric tube numbering in any direction from left, right, top, or bottom  
Reflected numbering for U-Tubes  
Design lock during data entry  
Multiple independent data-layers  
Normal and Reverse tube layouts
- Categories:** Up to 48 categories per file, all user defined, any 16\* visible  
20 shapes for tube styles e.g., circle, semicircles, quadrant chomp, bar, cross  
Up to 10 categories with user defined thresholds for importing %Wall Loss measurements
- Colours:** Assign colour to borders, fill, and background of tube layout  
Assign colour to text, frame backgrounds, and page
- Chart:** Pie Chart, Bar Chart (H & V), 2D and 3D  
User defined colours, titles, labels  
Print direct to output device
- Table:** Statistics tables, Tubes listed by category, Individual tube record
- Output:** Colour or Mono defined by output device  
A3, A4, A5, US Letter, US Legal, etc., defined by output device
- Report:** Up to 50 text frames per report including map, chart, table legend and text  
User defined text, font, style, size, colour, and position  
Frames can be boxed, shaded, or hidden  
WYSIWYG report layout using drag and drop method  
Text alignment, centering and justification
- Data:** Mouse for individual tube entry and for block entry  
Keyboard for individual tube entry
- Import:** Manual data entry direct to the screen or import from commercial Eddy Current manufacturers, including...
- Eddyfi™, Inc., Canada
  - Eddy Current Technology Inc., USA
  - Ether NDE, UK
  - Magnetic Analysis Corporation, USA
  - Russell NDE Systems Inc., Canada
  - Multiview compatible files
  - TSD16 & TSD32 custom files \*
  - Client's unique format files \*
  - Microsoft Access 2003 database options \*

\* Custom options on request....

This summary is a guide to the features available in the product, but should not be regarded as the Technical Specification which may vary from time to time.